

# A List of Parks in Aylmer

Our parks feature amenities for families, sports enthusiasts, and nature lovers. Browse our parks below, and plan to visit them all—you won't be disappointed!

## 1 Palmer Park (Band Shell Park)

*Located in the town square, perfect for lunch, live entertainment, or a shady spot after shopping downtown.*

## 2 Balmoral Park

*Home to our healing garden, the swimming pool, and one of many walking trails.*

## 3 Centennial Park

*This park is home to a toboggan hill, a swing set, and beautiful trees.*

## 4 Cottonwood Park

*This is the baby park of all our parks, it has yet to be developed.*

## 5 Crystal Park

*Play basketball or go for a walk on an unpaved trail.*

## 6 Estates Park

*Situated in a quiet neighbourhood, with many trees, this park has creative play structures, and benches.*

## 7 Elmview Park

*This is a naturalized green space, with a green pathway along Catfish Creek connecting to Rotary Park.*

## 8 Kinsmen Park

*Loaded with amenities, this park has a picnic area, pavilions, tennis courts, walking trails and creative play structures.*

## 9 Lions Park/Ward McKenna Conservation Area

*A tonne of trees, and large beautifully landscaped areas are the backdrops to a pavilion, a play structure, and walking trails.*

## 10 Optimist Park

*With a baseball diamond, disc golf course, picnic areas, pavilions and our feature skate park "The Grind", this park has it all for the sport enthusiasts!*

## 11 Rotary Park (Audubon Cooperative Sanctuary)

*This is a naturalized park featuring blue bird boxes, the purple martin house, and memorial tree park.*

## 12 Steen Conservation Area

*Baseball diamond, disc golf course, soccer pitch, tree arboretum, a walking trail leading over two scenic footbridges, and the perfect hills for tobogganing in the winter!*

# Visit Aylmer Parks

---

## WHERE THERE IS SOMETHING FOR EVERYONE

---

Beautiful large old trees, and a bubbling creek, set the tone for our beautiful Aylmer Parks.

Enjoy your lunch in one of our picnic areas, or on one of our benches by the creek, go for your morning run along one of our paved or unpaved trails. Bring the little ones to feed the ducks or play on one of our creative play structures. These are just a few amenities our Parks have to offer, visit one today!



# PARKS IN Aylmer



### Optimist Park

*Enjoy this paved trail through Aylmer's Parks along Catfish Creek*

### Town of Aylmer

46 Talbot Street West, Aylmer Ontario N5H 1J7  
t: 519.773.3164 | [www.aylmer.ca](http://www.aylmer.ca)

### Parks Department

Thom Polland, Parks & Facilities Manager  
t: 519-773-3164 | e: [tpolland@town.aylmer.on.ca](mailto:tpolland@town.aylmer.on.ca)



## Certified Audubon Cooperative Sanctuary

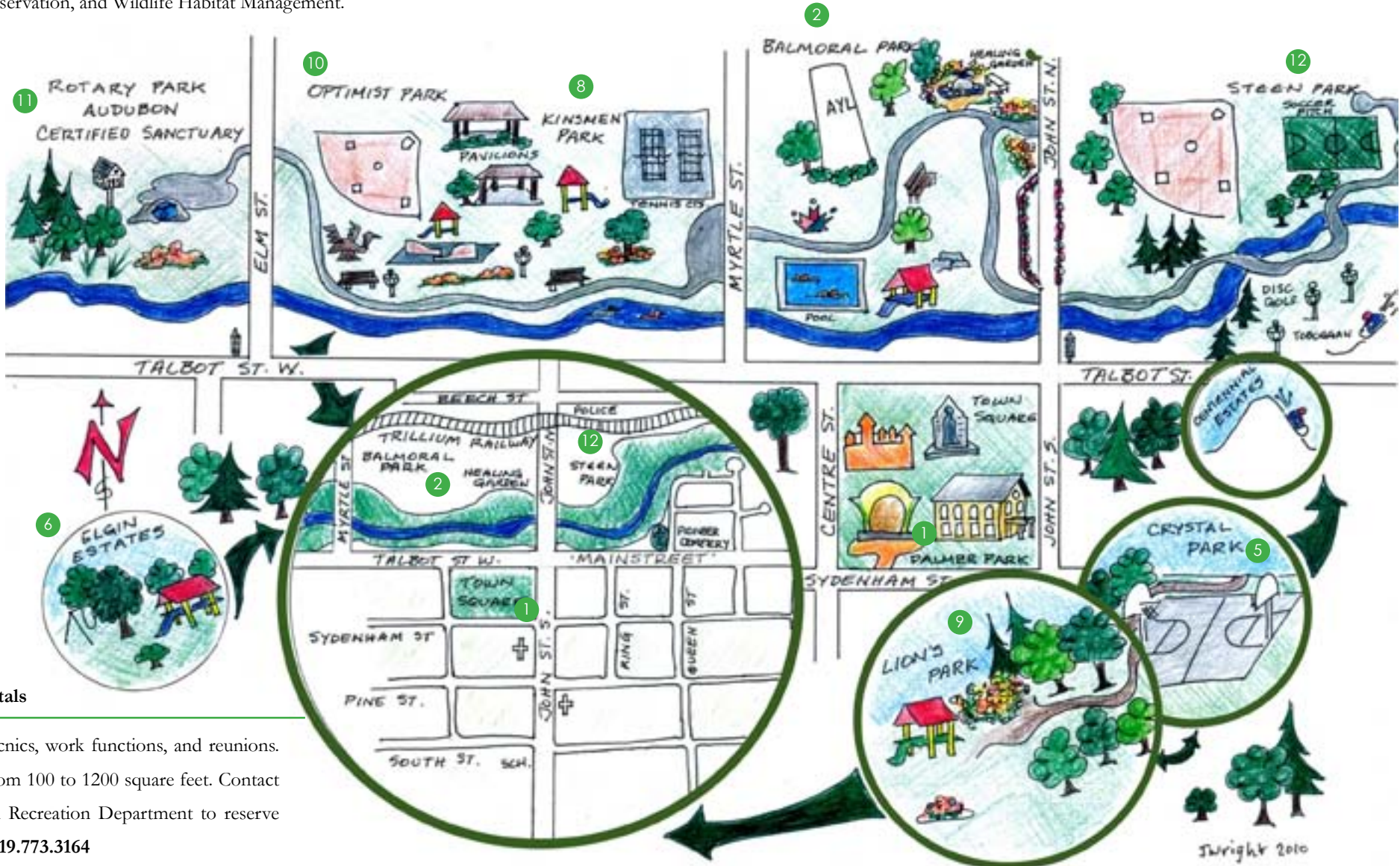
Rotary Park is the *first* property in Ontario to be designated through the Audubon Society and the only corporation and municipal corporation in Canada. Rotary Park, is the 46th *in the world* to obtain certification. Rotary Park has achieved this designation by demonstrating a high degree of environmental quality in five different areas: Environmental Planning, Outreach and Education, Waste Management, Resource Conservation, and Wildlife Habitat Management.

## What's a Healing Garden?

There are many definitions of a healing garden, but our goal, was to create a relaxing and beautiful garden where you can relax, rejuvenate, and feel refreshed after you leave. Healing gardens have been around for centuries and are noted for their help in healing health ailments, and are gaining popularity in hospital gardens.

## The Grind Skate Park

The Grind has been a hub of activity for all ages to enjoy since it's construction in 2004. The community came together along with service clubs, the Rotary Club, the Town of Aylmer, a youth group, the Trillium Foundation, and corporate donations from our businesses to help this Skate Park become a reality.



## Pavilion Rentals

Perfect for picnics, work functions, and reunions. Sizes range from 100 to 1200 square feet. Contact the Parks and Recreation Department to reserve yours today! **519.773.3164**